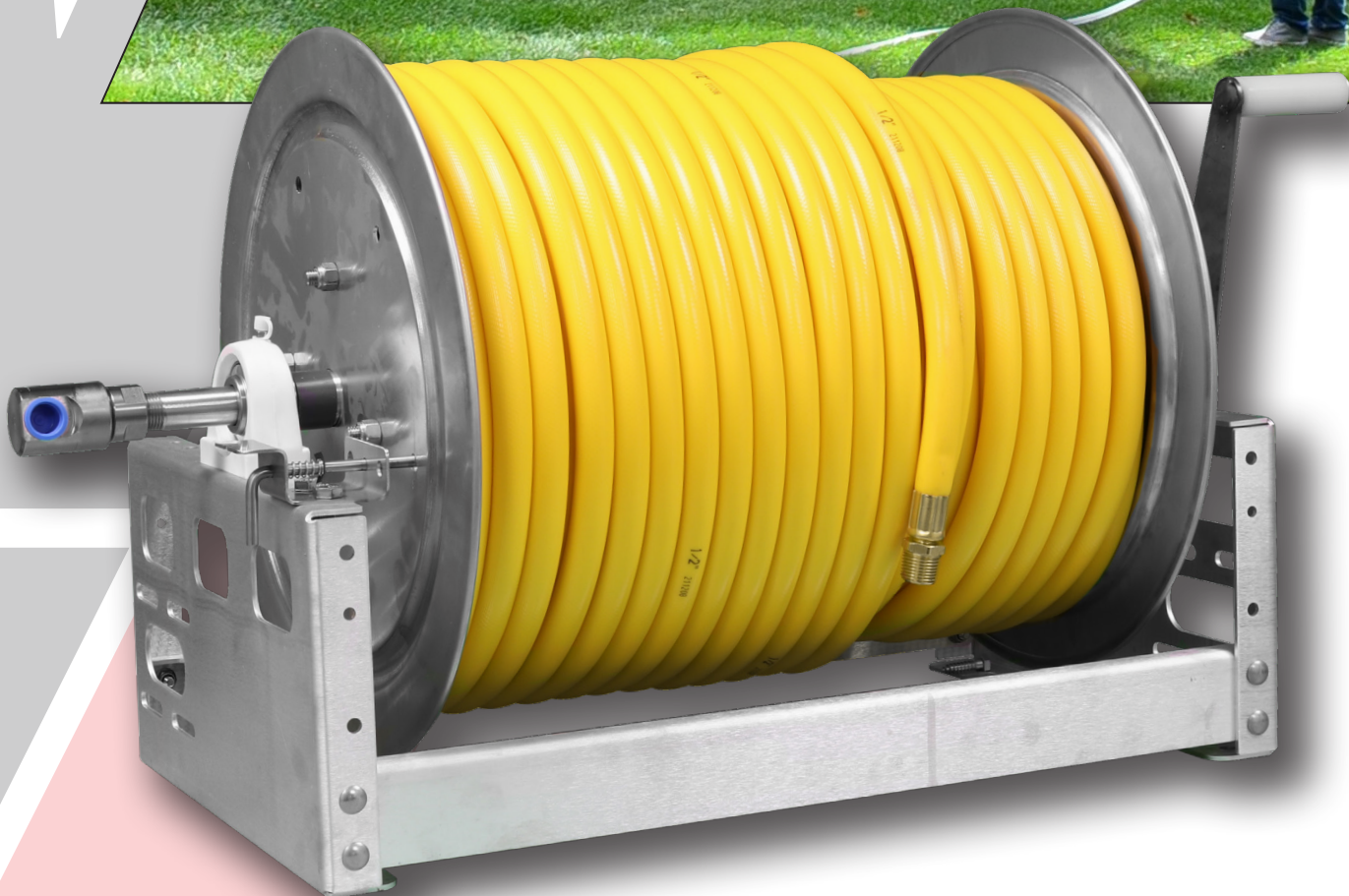


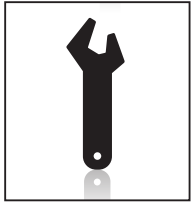


ALUMINUM HOSE REELS

OWNER'S MANUAL



TOOLS REQUIRED ▶



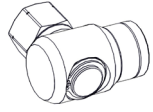
1 OR 1 1/8" WRENCH



THREAD SEALANT TAPE (INCLUDED)

MOUNTING HARDWARE NOT INCLUDED. ALL MOUNTING HOLES HAVE A 3/8" DIAMETER.

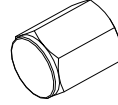
SOFT WASH INCLUDED COMPONENTS ▼



Soft Wash Swivel (1)
33-201078



Soft Wash Handle (1)
34-201012
(Manual Reels)

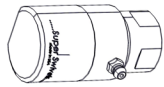


End Cap (1)
33-201028
(Electric Reels)

MODELS:
HR-12AF-SW / HR-18AF-SW
HR-12AF-E-SW / HR-18AF-E-SW
HR-12AU-SW / HR-18AU-SW

MAX PSI RATING: 725

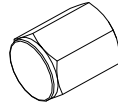
HIGH PRESSURE INCLUDED COMPONENTS ▼



High Pressure Swivel (1)
33-201035



High Pressure Handle (1)
34-201011
(Manual Reels)



End Cap (1)
33-201028
(Electric Reels)

MODELS:
HR-12AF-HP / HR-18AF-HP
HR-12AF-E-HP / HR-18AF-E-HP
HR-12AU-HP / HR-18AU-HP

MAX PSI RATING: 5000

ACCESSORIES SOLD SEPARATELY ▼

ALL ACCESSORIES ARE AVAILABLE THROUGH YOUR VALLEY INDUSTRIES DEALER. SEE STORE FOR DETAILS.

NOT COMPATIBLE WITH U-CHANNEL HOSE REELS



12" Hose Reel Guides
HG-12-AL



18" Hose Reel Guides
HG-18-AL



Stacking Kit for 12" & 18"
Manual Reels
HR-AFST-KIT

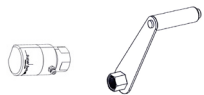


Stacking Kit for 12" & 18"
Electric Reels
HR-AFEST-KIT

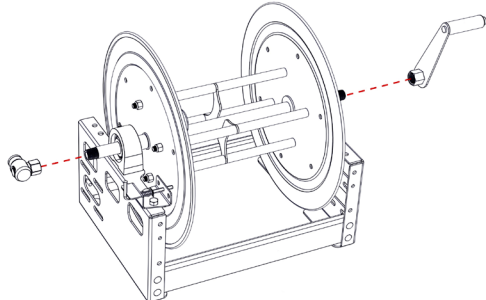
HOSE REEL ASSEMBLY

1a.

PARTS



TOOLS



For manual reels, apply Thread Sealant Tape to the threads on the Axel Tube opposite of the Drag.

Hand tighten the Swivel to these threads and tighten 2-3 additional turns with Wrench.

NOTE: 1" Wrench needed for Soft Wash Swivel.
1-1/8" Wrench needed for High Pressure Swivel.

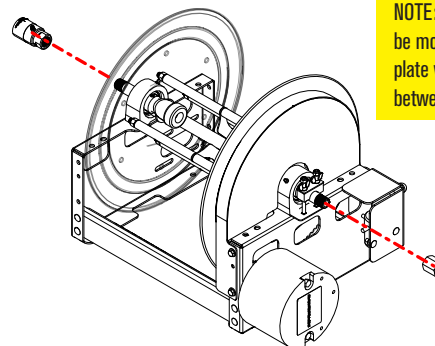
Apply Thread Sealant Tape to other threaded side of Axel Tube. Add the Handle.

1b.

PARTS



TOOLS



NOTE: Electric reels must be mounted to a rigid base plate with less than 1/4" flex between mounting holes.

For electric reels, apply Thread Sealant Tape to the threads on the Axel Tube opposite of the motor.

Hand tighten the Swivel to these threads and tighten 2-3 additional turns with Wrench.

NOTE: 1" Wrench needed for Soft Wash Swivel.
1-1/8" Wrench needed for High Pressure Swivel.

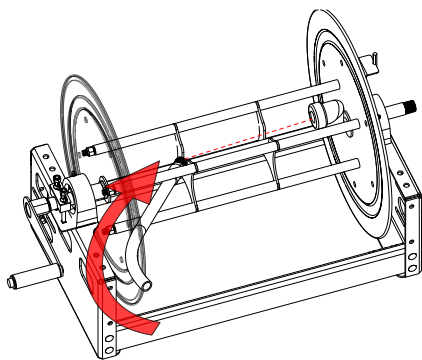
Apply Thread Sealant Tape to other threaded side of Axel Tube. Add the End Cap.

2.

PARTS

TOOLS

None



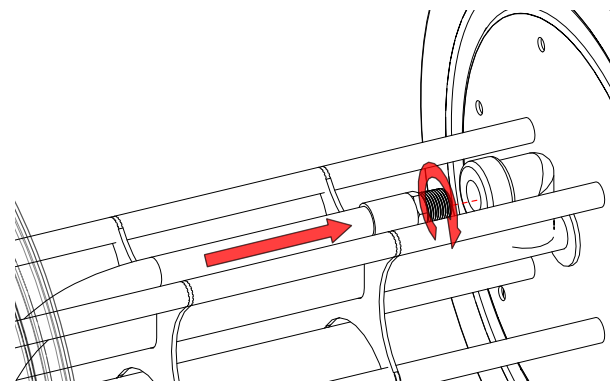
Feed Hose through the Slots in the Core Support(s) from side opposite of the Elbow Connection on the Axel Tube.

NOTE: Elbow Connection features 1/2" FNPT thread.

3.

PARTS

TOOLS



Apply Thread Sealant Tape to threaded end of Hose and connect to the Elbow Connection of the Axel Tube.

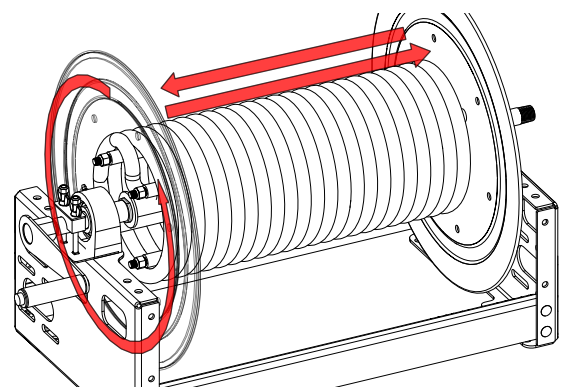
Use Adjustable Wrench to tighten three additional turns.

ELECTRIC REEL MOUNTING

4. PARTS

TOOLS

None



Wrap Hose tight to Handle side plate. Keep coil tight, move to opposite side of plate. Reverse wrap directions at the side and repeat until Hose is completely spooled.

NOTE: Charge the hose with pressure before winding it onto the reel. This will protect the drum from excessive pressure.

ADDITIONAL ASSEMBLY STEPS

Mounting Hose Reel:

- Mount hose reel frame to flat surface with 3/8" diameter hardware (not included).

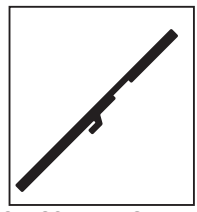
- Electric hose reel **MUST** be bolted to a **rigid** location. Once it is bolted in it's final location, align sprockets and rotate spool by hand, **PER THE FOLLOWING STEPS**, to verify functionality prior to powered operation.

- Ensure hose reel frame is firmly mounted.

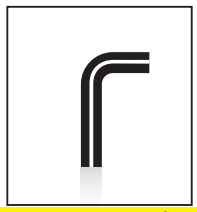
Installation of Inlet Hose:

- Apply thread sealant to inlet hose and connect to the hose reel swivel.
- Flush product through the system before connecting inlet hose to source
- Connect inlet hose to supply source.

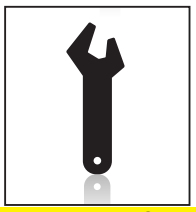
This Electric Hose Reel includes a Sprocket Alignment Tool and requires a 1/8" Hex Head Wrench and 7/16" Wrench (not included) to complete sprocket alignment while mounting.



SPROCKET ALIGNMENT TOOL (1) 31-201082



1/8" HEX WRENCH NOT INCLUDED

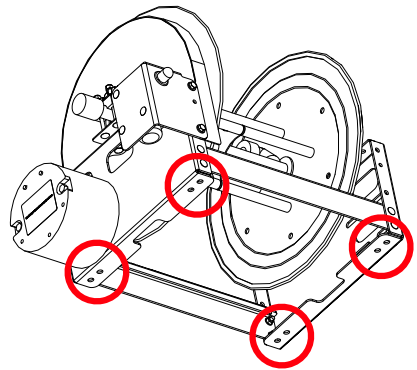


7/16" WRENCH NOT INCLUDED

1. PARTS

TOOLS

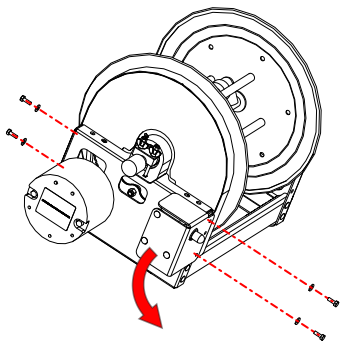
None



Use mounting pattern holes on bottom of frame to bolt reel in rigid, non-flexing location.

2. PARTS

TOOLS



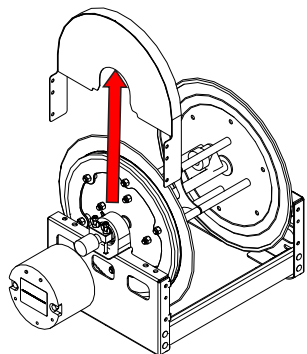
Remove 4 x chainguard retaining bolts with a 7/16" wrench and lay the switch panel to side.

3.

PARTS

TOOLS

None

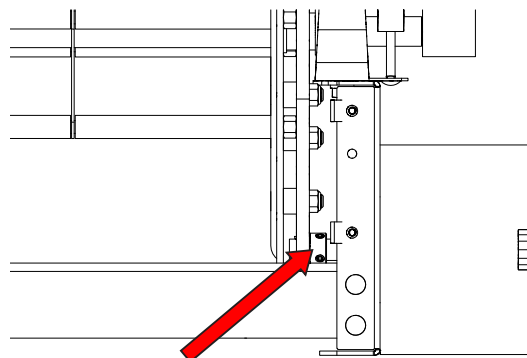


Remove chainguard and set aside.

4.

PARTS

TOOLS

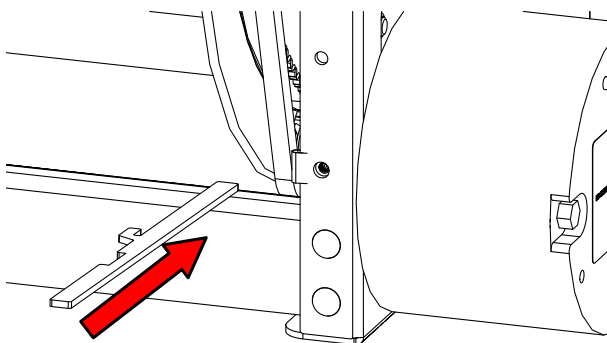


Loosen 2 x sprocket set screws with 1/8" hex wrench.

5.

PARTS

TOOLS

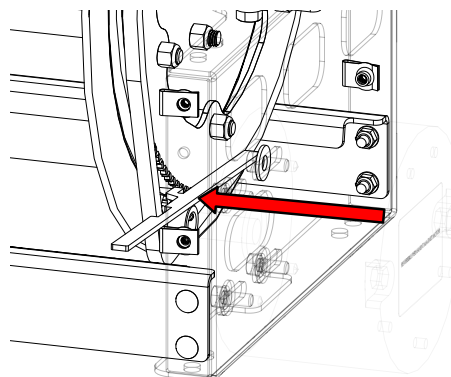


Insert the Sprocket Alignment Tool (included with Electric Hose Reels only) on motor side of chain sprockets.

6.

PARTS

TOOLS

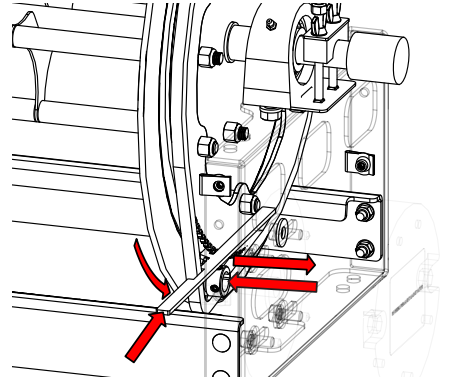


Place alignment tab in chain window created by motor sprocket. Push tool tight to large sprocket.

WARRANTY INFORMATION

7. PARTS

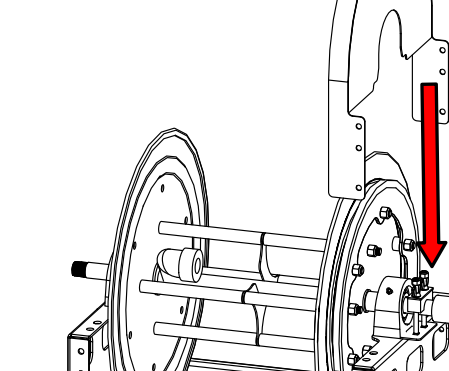
TOOLS



Push tool tight to large sprocket and pivot down to rest on motor sprocket. Adjust motor sprocket until it touches face of tool.

8. PARTS

TOOLS
None



Tighten sprocket set screws, test rotation for smooth operation and reverse previous steps to reassemble.

Hose reels manufactured by Valley Industries are warrantied for 1-year from date of shipment when properly installed, maintained, and operated. The warranty will cover only manufacturer and workmanship defects

Valley Industries will not be liable for any consequential, incidental, or indirect damages from any cause whatsoever.

Not Covered Under Warranty:

- Normal wear and tear that have been subjected to accident, abuse, misapplication, improper installation, or improper maintenance.
- Failure to use a flexible inlet connection.
- Failure to follow all procedures outline in the safety guidelines of this manual.
- Components not manufactured by Valley Industries.
- Corrosion.
- Soft wash and high pressure swivels.

NOTE: It is important to use a “flexible” inlet hose. DO NOT USE solid piping or restrain inlet hose to cause side force on swivel. Warranty will be voided if not properly installed. For flexible hose use only. Pressure/temp rating of the lowest rated component (hose or reel) is the assembly’s rating.

SAFETY INFORMATION

WARNING: USER RESPONSIBILITY

- The user, through their own analysis and testing, is solely responsible for making the final selection of all components, while assuring that performance, maintenance, safety, and warning requirements are met.

WARNING: SAFETY

- Read all following safety instructions carefully before attempting to install, operate or maintain these hose reels. Only qualified individuals should install and commission these hose reels. Failure to follow instructions could result in hose reels to perform improperly along with personal injury or property damage.
- User should assess and determine if any additional safety measures are required for particular application and operation, while fully instructing on those safety measures.
- Follow good maintenance practices by establishing a process of inspection, testing and replacement of hose reel components based off continuous use.
- Only properly trained individuals should inspect, test or service hose reels. Periodic updating of training is recommended.
- Modification of the hose reel may cause increase wear caused by improper maintenance may void warranty.

1. Pressure Warnings:

- This hose reel should be properly installed before use in accordance with local codes and ordinances.
- The pressure from within the hose reel should be released before any service functions are performed.
- This hose reel must not be used for pressure greater than the rating.

2. Operational Warnings:

- Exercise care when handling the hose reel during normal operation.
- Do not use hose different from that for which the reel is intended.
- Changes in diameter, weight per foot, length of hose or flexibility (Minimum Bend Radius) will affect the operation of the reel.
- Mounting hardware and fasteners should be installed to maintain tightness under vibration and checked periodically to ensure tightness.
- Overhead installation mountings should be such that the reel is not supported by bolts in tension. A safety chain, cable, enclosure, or netting is strongly recommended to minimize damage and/or possible injury in the event of a mounting failure.

3. Pressure & Temperature Rating:

- All reels covered in this manual have specific P.S.I. ratings, given on page 2. Reels should not be used at pressures greater than the rating, or that of the hose, whichever is lower.
- Operational temperature ranges vary across the wide range of hose options. Hose reels should not be used at a temperature greater than 250° F or maximum rating of the hose, whichever is lower.


WARNING: SAFETY

TROUBLESHOOTING

Pressure & Temperature Rating (Continued):

- The pressure rating of the reel without hose must not be greater than the operational capacity of a reel. Variations in the OD of higher rated hose will affect the operational capacity of the reel.

4. Personal Safety:

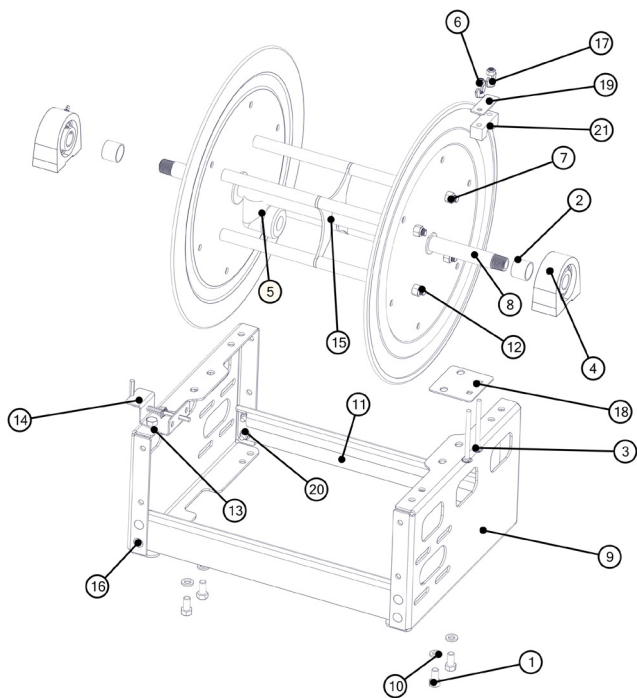
- Ensure reel has been properly installed before connecting supply line.
- Before connecting to reel, be certain supply line pressure rating is equal to or higher than hose reel.
- If a leak should occur after applying pressure to the reel, immediately discontinue supply line pressure. Inspect and repair all leaks.

5. Electric Reel Safety:

- **ALWAYS USE CAUTION WHEN OPERATING NEAR CHAIN AND SPROCKETS.** Chain guards should not be removed except for maintenance, then properly reinstalled.
- **USE CAUTION WHEN GUIDING HOSE OR CABLE BACK ONTO POWER REELS.** Keep the hand guiding the hose back onto the reel several inches away from the rotating drum so that there is no possibility of trapped or pinched fingers. Use proper personal protection equipment, and avoid loose fitting clothing, jewelry or long hair.
- **ALWAYS DISCONNECT POWER SOURCE PRIOR TO INSTALLATION OR PERFORMING MAINTENANCE ON ANY POWER REWIND REEL.**

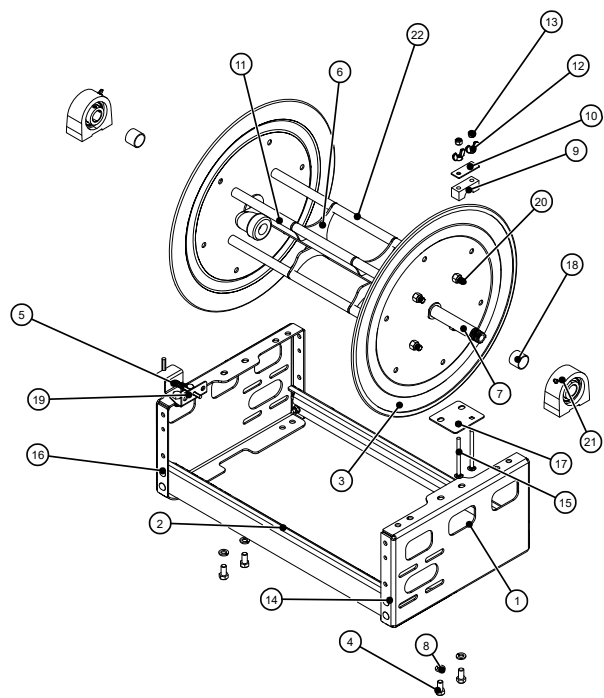
PROBLEM	CAUSE	SOLUTION
Hose Will Not Fully Fit On To Drum of Reel	Hose longer than specified.	Cut down hose to meet reel capacity.
	Outside diameter of hose is larger than specification.	Replace hose with a hose that meets the specified maximum outside diameter requirements
	Hose was not hand guided onto reel and wound up unevenly on drum.	Hand guide hose to drum to wrap evenly as it is wound on to the reel.
Reel Keeps Turning When Operator Stops Pulling Out Hose	Tension drag brake is too loose causing hose backlash.	Adjust tension drag brake by turning fastener clockwise.
Plumbing Leaking or Damaged	Max pressure rating for reel has been exceeded.	Replace or repair damaged components. Check max pressure rating of reel.
	Application is not compatible with plumbing or swivel materials.	Contact to determine compatibility or environmental issues (Temperature rating).
Swivel Leaking	Swivel seals are damaged or worn.	Replace swivel seals.
Swivel Assembly Not Moving Freely	Inlet hose fitting has been over-tightened.	Remove and examining swivel assembly for damage. Replace if necessary.
	Inlet hose is not flexible.	Replace rigid inlet hose with flexible hose, properly tighten.
Electric Reel Will Not Respool when Button is Pressed	Power Disconnected.	Verify all connections to the battery.
	Battery Dead.	Verify battery is fully charged.
	Chain is Off the Sprocket.	With power disconnected, remove chain guard and position the chain back on the sprocket. Verify the reel is mounted on a rigid, level surface and cannot twist out of alignment. Verify Sprocket alignment and adjust if needed.

BREAKDOWN 12" MANUAL



ID	Part Number	Description	Qty
1	33-201038	3/8-16x3/4" Hex Bolt	6
2	33-201026	Nylon Spacer	2
3	33-201030	1/4-20x3.5" Full Thread Carriage Bolt	2
4	33-201037	Bearing	2
5	32-201007	Axel Tube	1
6	33-201029	1/4-20 Nylock Hex Nut	2
7	33-300002	3/8-16 Nylock Hex Nut	8
8	31-201064	PVC Hose Wrap Tube	8
9	31-201043	Side Frame	2
10	33-201039	3/8" Lock Washer	4
11	21-201044	12" Cross Member	2
12	31-201070	12" Spool Tie Rod	4
13	33-100131	3/8-16 Nylock Hex Nut	2
14	34-201010	Hose Reel Lock	1
15	31-201065	Core Support	1
16	33-201021	1/4-20x3/4" Carriage Bolt	8
17	33-201034	1/4-20 Wing Nut	2
18	31-201051	Bearing Retainer Plate	1
19	31-201050	Brake Support Plate	1
20	33-201040	1/4-20 Nylock Flange Nut	8
21	31-201072	Brake Block	1

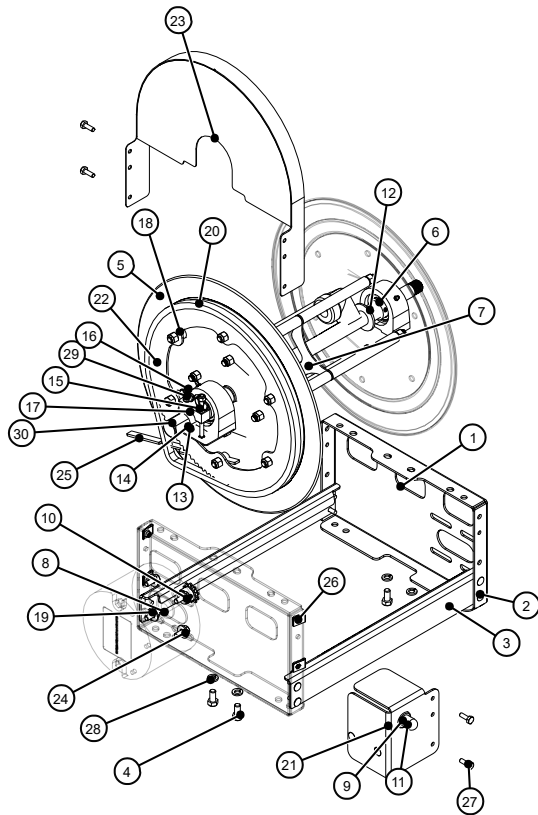
BREAKDOWN 18" MANUAL



ID	Part Number	Description	Qty
1	31-201043	Side Frame	2
2	31-201059	18" Cross Member	2
3	33-201023	Hose Reel Disc	2
4	33-201038	3/8-16x3/4" Hex Bolt	6
5	31-201010	Hose Reel Lock	1
6	31-201065	Core Support	2
7	32-201009	Axel Tube	1
8	32-201039	3/8" Lock Washer	4
9	31-201072	Brake Block	1
10	31-201050	Brake Support Plate	1
11	33-300002	3/8-16 Nylock Hex Nut	8
12	33-201034	1/4-20 Wing Nut	2
13	33-201029	3/8-16 Nylock Hex Nut	2
14	33-201040	1/4-20 Nylock Flange Nut	8
15	33-201030	1/4-20x3.5" Full Thread Carriage Bolt	2
16	33-201021	1/4-20x3/4" Carriage Bolt	8
17	31-201051	Bearing Retainer Plate	1
18	33-201026	Nylon Spacer	2
19	33-300002	3/8-16 Nylock Hex Nut	2
20	31-201060	18" Spool Tie Rod	4
21	33-201037	Bearing	2
22	31-201064	PVC Hose Wrap Tube	12

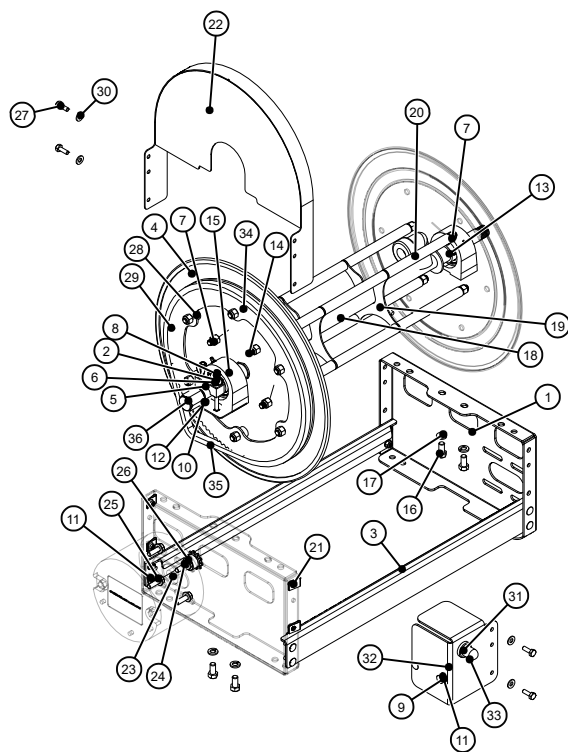
HAVING TROUBLE? CALL THE SUPPORT TEAM AT: 800.864.1649

BREAKDOWN 12" ELECTRIC



ID	Part Number	Description	Qty
1	31-201043	Frame Side	2
2	31-201043	Carriage Bolt 1/4-20 x 3/4"	10
3	31-201044	12" Cross Member	2
4	33-201031	Hex Head Bolt 3/8-16 x 3/4"	4
5	33-201023	Disc	2
6	33-201037	Bearing	2
7	31-201074	Core Support	1
8	33-201061	Motor	1
9	31-201081	Switch Panel	1
10	33-201084	Sprocket	1
11	33-103835	Push Button Switch	1
12	33-201026	Spacer	2
13	31-201051	Retainer Plate	1
14	33-201030	Full Thread Carriage Bolt 1/4-20 x 3.5"	2
15	31-201050	Brake Support Plate	1
16	33-201029	Nylock Nut	2
17	31-201072	Brake Block	1
18	33-201086	Unthreaded Spacer	6
19	33-201031	Hex Head Bolt 5/16-18 x 3/4"	4
20	33-201085	Roller Chain	1
21	33-103834	Solenoid	1
22	31-201080	Drive Sprocket	1
23	31-201078	Chain Guard	1
24	33-300007	Flat Washer 5/16"	4
25	31-201082	Alignment Tool	1
26	33-201083	Clip On Barrel Nut	4
27	33-300004	Hex Head Bolt 1/4-20 x 3/4"	4
28	33-201039	Lock Washer 3/8"	4
29	33-201034	Wing Nut	2
30	33-201028	Pipe Cap	1

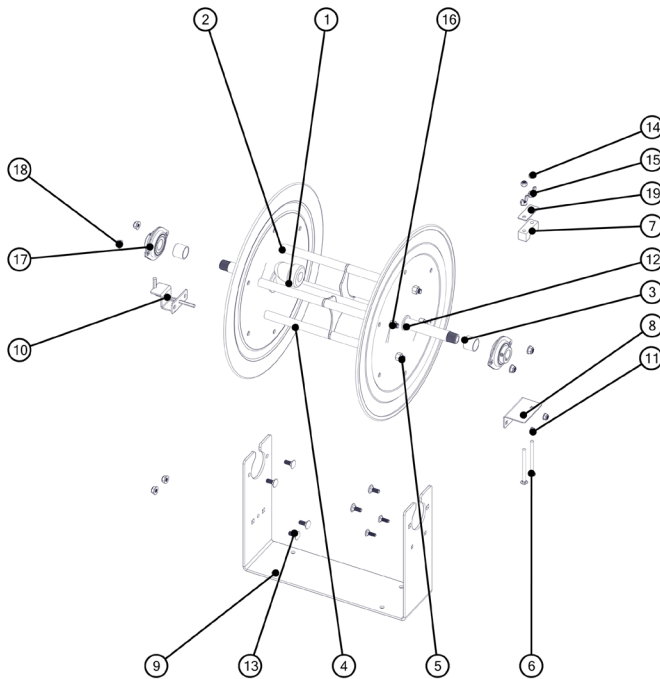
BREAKDOWN 18" ELECTRIC



ID	Part Number	Description	Qty
1	31-201043	Frame Side	2
2	33-201034	Wing Nut 1/4-20	2
3	31-201059	18" Cross Member	2
4	33-201023	Disc	2
5	31-201072	Brake Block	1
6	31-201050	Brake Support Plate	1
7	33-300002	Nylock Hex Nut 3/8-16	14
8	33-201029	Nylock Hex Nut 1/4-20	2
9	33-201040	Nylock Flange Nut 1/4-20	10
10	33-201030	Full Thread Carriage Bolt 1/4-20 x 3.5"	2
11	33-201021	Carriage Bolt 1/4-20 x 3/4"	10
12	31-201051	Bearing Retainer Plate	1
13	33-201026	Spacer	2
14	31-201060	18" Tie Rod	4
15	33-201037	Bearing	2
16	33-201038	Hex Head Bolt 3/8-16 x 3/4"	4
17	33-201039	Lock Washer 3/8"	4
18	32-201009	HP Axel Tube Weldment	1
19	31-201074	Core Support	2
20	31-201064	PVC Tube	12
21	33-201083	Clip-On Barrel Nut	4
22	32-201011	Chain Guard	1
23	33-201061	Motor	1
24	33-300007	Flat Washer 5/16"	4
25	33-201031	Hex Head Bolt 5/16-18 x 3/4"	4
26	33-201084	Sprocket	1
27	33-300004	Hex Head Bolt 1/4-20 x 3/4"	4
28	33-201080	Hex Head Bolt 3/8-16 x 1.25"	6
29	31-201080	Drive Sprocket	1
30	33-201087	Flat Washer 1/4"	4
31	31-201081	Switch Panel	1
32	33-103834	Solenoid	1
33	33-103835	Push Button Switch	1
34	33-201086	Unthreaded Spacer	6
35	33-201085	Chain	1
36	33-201028	Pipe Cap	1

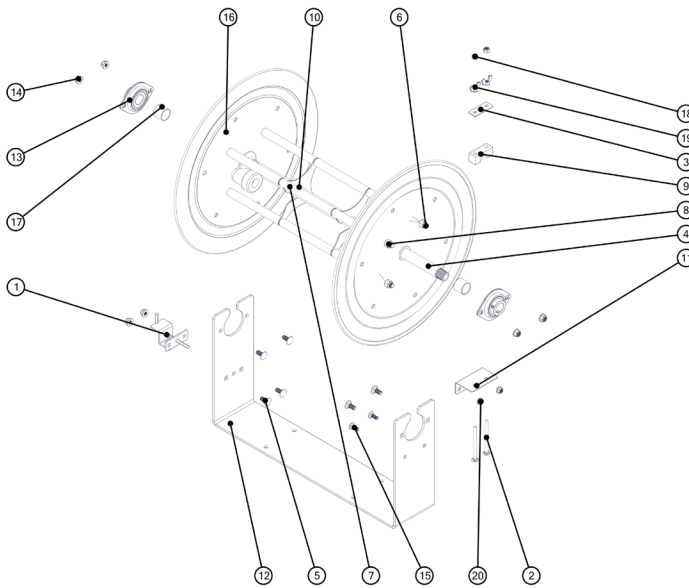
HAVING TROUBLE? CALL THE SUPPORT TEAM AT: 800.864.1649

BREAKDOWN 12" U-CHANNEL



ID	Part Number	Description	Qty
1	31-201068	Axel Tube	1
2	31-201064	PVC Hose Wrap	8
3	33-201026	Spacer	11
4	31-201064	PVC hose Wrap	8
5	31-201070	12" Tie Rod	4
6	33-201021	1/4-20 x 3/4" Carriage Bolt	2
7	31-201072	Brake Block	1
8	31-201075	Retainer Plate	1
9	31-201076	12" U-Channel Frame	1
10	31-201037	Hose Reel Lock	1
11	33-201040	1/4-20 Flange Nut	2
12	33-201023	Disc	2
13	33-300006	5/16-18x1" Carriage Bolt	3
14	33-201029	1/4-20 Nylock Hex Nut	2
15	33-201034	1/4-20 Wing Nut	2
16	33-300002	3/8-16 Nylock Hex Nut	8
17	33-201082	Bearing	2
18	33-201041	5/16-18 Flange Nut	6
19	31-201050	Brake Support Plate	1

BREAKDOWN 18" U-CHANNEL



ID	Part Number	Description	Qty
1	31-201037	Lock Bracket	1
2	33-200130	1/4-20x3.25" Carriage Bolt	2
3	31-201050	Brake Support Plate	1
4	31-201058	Axel Tube	1
5	33-300006	5/16-18x1" Carriage Bolt	6
6	31-201060	18" Tie Rod	4
7	31-201064	PVC Hose Wrap	12
8	33-300002	3/8-16 Nylock Hex Nut	8
9	31-201072	Brake Block	1
10	31-201074	Core Support	2
11	31-201075	Retainer Plate	1
12	31-201077	18" U-Channel Frame	1
13	33-201082	Bearing	2
14	33-201041	5/16-18 Nylock Flange Nut	6
15	33-201021	1/4-20x3/4" Carriage Bolt	2
16	33-201023	Disc	3
17	33-201026	Spacer	2
18	33-201029	1/4-20 Nylock Hex Nut	2
19	33-201034	1/4-20 Wing Nut	2
20	33-201040	1/4-20 Nylock Flange Nut	2

ELECTRIC HOSEREEL WIRING DIAGRAM

WARNING: BEFORE WIRING MOTOR VERIFY THE MOTOR VOLTAGE ON MOTOR TAG MATCHES SUPPLY VOLTAGE.

HR-AF-E Hose Reels Use 12VDC Motors

