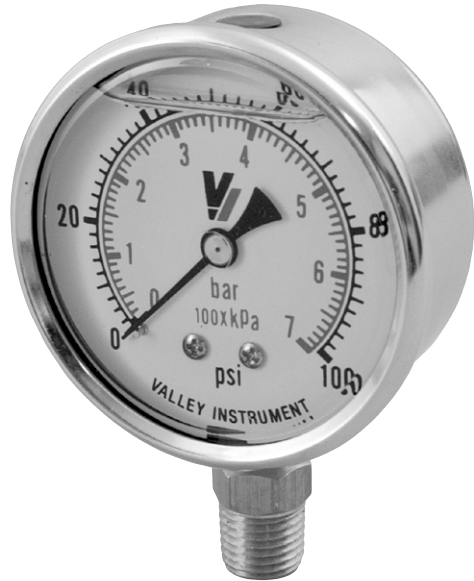


GAUGES



Model 40 Industrial Gauges (Dual Scale)

STANDARD RANGES

Standard gauge scales - Dual.

Outer scale is PSI.

Inner scale is metric (kPa & bar.)

1 1/2", 2", 2 1/2", or 4" Case

Center Back or Bottom Mount

These gauges are designed for use with any medium not corrosive to brass or bronze. Liquid-filled gauges are recommended for reducing shock caused by pressure fluctuations or vibration.


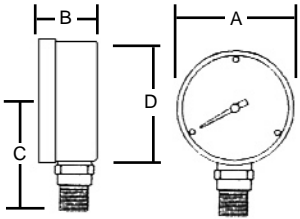

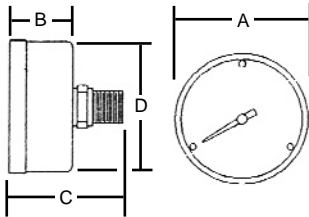

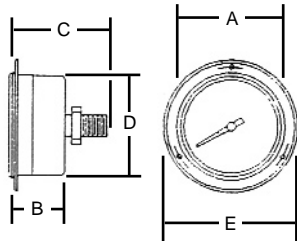

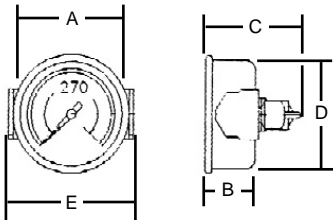
STANDARD DIAL RANGES		AVAILABILITY				GRADUATION	
PSI	bar.	1 1/2"	2"	2 1/2"	4"	Major	Minor
0-30" VAC	-1 bar	✓	✓	✓	✓	5	.5
30"-0-15 psi	-1-0-1 bar	✓	✓	✓	✓	5	.5
30"-0-30 psi	-1-0-2 bar	✓	✓	✓	✓	10	1
30"-0-60 psi	-1-0-4 bar	✓	✓	✓	✓	10	1
30"-0-100 psi	-1-0-7 bar	✓	✓	✓	✓	20	2
30"-0-150 psi	-1-0-10 bar	✓	✓	✓	✓	20	2
30"-0-200 psi	-1-0-14 bar	✓	✓	✓	✓	50	5
30"-0-300 psi	-1-0-20 bar	✓	✓	✓	✓	50	5
0-15 psi	0-1 bar	✓	✓	✓	✓	2	.2
0-30 psi	0-2 bar	✓	✓	✓	✓	5	.5
0-60 psi	0-4 bar	✓	✓	✓	✓	10	1
0-100 psi	0-7 bar	✓	✓	✓	✓	20	2
0-160 psi	0-11 bar	✓	✓	✓	✓	20	2
0-200 psi	0-14 bar	✓	✓	✓	✓	50	5
0-300 psi	0-20 bar	✓	✓	✓	✓	50	5
0-400 psi	0-27 bar	✓	✓	✓	✓	100	10
0-600 psi	0-40 bar	✓	✓	✓	✓	100	10
0-1000 psi	0-70 bar	✓	✓	✓	✓	200	20
0-1500 psi	0-100 bar	✓	✓	✓	✓	200	20
0-2000 psi	0-140 bar	✓	✓	✓	✓	500	50
0-3000 psi	0-200 bar	✓	✓	✓	✓	500	50
0-5000 psi	0-315 bar	✓	✓	✓	✓	1000	100
0-6000 psi	0-400 bar			✓	✓	1000	100
0-10000 psi	0-700 bar			✓	✓	2000	200

FEATURES	
MOVEMENT:	Brass
BOURDON TUBE:	C-Shaped in phosphor bronze up to 600 psi and Helical in phosphor bronze above 600 psi
POINTER:	Black enameled aluminum
DIAL:	White aluminum
WINDOW:	Polycarbonate - Temperature compensating
CASE MATERIAL	304 Stainless steel
CONNECTION MATERIAL	Brass
CONNECTION SIZE	1/8" MNPT on 1 1/2" size. 1/4" MNPT on 2", 2 1/2" and 4" sizes.
ACCURACY	ASME/ANSI B40.1 Grade A (2-1-2%)

PRICING AND OPTIONS - (Stock)

1-1/2" CASE Clamp Ring Front Flange Call for Pricing 0430/40-CR . Call for Pricing 0330/40-FF . Call for Pricing
2" CASE Clamp Ring Front Flange Rubber Cover, Black Call for Pricing 1430/40-CR . Call for Pricing 1330/40-FF . Call for Pricing 20RC-BK. . . Call for Pricing
2-1/2" CASE U-Clamp Front Flange Rubber Cover, Blue Call for Pricing 2440-UC . . . Call for Pricing 2330/40-FF . Call for Pricing 25RC-BL . . . Call for Pricing
4" CASE U-Clamp Front Flange 1/4" - 1/2" Adapter Call for Pricing 4440-UC . . . Call for Pricing 4330/40-FF . Call for Pricing AB-1412. . . Call for Pricing

CASE STYLES AND DIMENSIONS

MOUNT STYLE	Image	Diagram	SIZE	A	B	C	D	E
			1-1/2"	1.735"	1.075"	1.5"	1.575"	n/a
BOTTOM MOUNT Style 1			2"	2.102"	1.075"	1.734"	1.970"	n/a
			2-1/2"	2.620"	1.165"	2.270"	2.470"	n/a
			4"	4.200"	1.265"	2.734"	3.969"	n/a
			SIZE	A	B	C	D	E
BACK MOUNT Style 2			1-1/2"	1.780"	0.900"	1.600"	1.614"	n/a
			2"	2.211"	1.090"	2.045"	2.030"	n/a
			2-1/2"	2.620"	1.165"	2.270"	2.470"	n/a
			4"	4.200"	1.265"	2.734"	3.969"	n/a
SIZE	A	B	C	D	E			
FRONT FLANGE Style 3			1-1/2"	1.735"	1.075"	1.734"	1.575"	1.859"
			2"	2.102"	1.075"	1.880"	1.970"	2.281"
			2-1/2"	2.620"	1.165"	2.270"	2.470"	2.281"
			4"	4.200"	1.265"	2.734"	3.969"	5.297"
SIZE	A	B	C	D	E			
PANEL MOUNT Style 4			1-1/2"	1.735"	1.075"	1.625"	1.575"	1.797"
			2"	2.102"	1.075"	1.880"	1.970"	2.219"
			2-1/2"	2.620"	1.165"	2.270"	2.470"	1.109"
			4"	4.200"	1.265"	2.734"	3.969"	5.203"

ORDERING INFORMATION

To determine the ordering number, use the following information

Example - 4240GXB3000 = 4", 1/4 CBM, Industrial, Glycerin-filled, Stainless Case, 3000 PSI

1 st Digit	2 nd Digit	3 rd & 4 th Digits	5 th Digit	6 th Digit	7 th Digit	Range	Suffix
Dial Size	Case Style	Model	Fill Material	Case Material	Wetted Parts	PSI	Options
0 = 1.5" 1 = 2" 2 = 2.5" 4 = 4"	1 = Bottom 2 = Back 3 = Front Flange 4 = Panel Mount	40 = Industrial	D - Dry G - Glycerin S - Silicone F - Florolube	X = Stainless	B = Copper Alloy	SEE RANGE CHART	Custom Logo Color Dial Special Dial Etc.