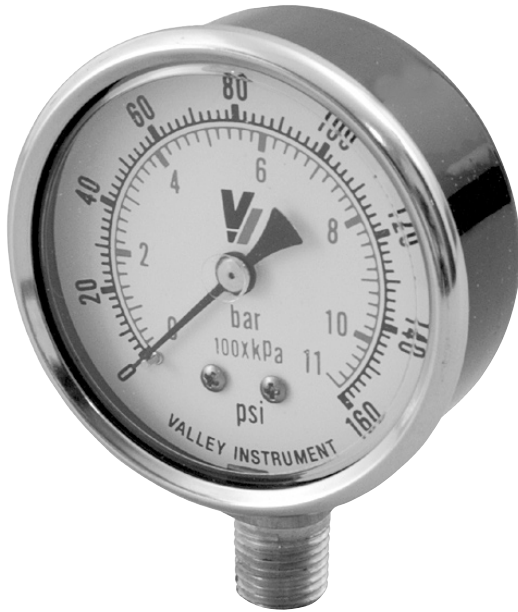


**GAUGES**

# Model 30 Utility Gauges (Dual Scale)



**STANDARD RANGES**

Standard gauge scales - Dual.  
Outer scale is PSI.  
Inner scale is metric (kPa & bar.)

STANDARD DIAL RANGES		AVAILABILITY				GRADUATION	
PSI	bar.	1 1/2"	2"	2 1/2"	4"	Major	Minor
0-30" VAC	-1 bar	✓	✓	✓	✓	5	.5
30"-0-15 psi	-1-0-1 bar	✓	✓	✓	✓	5	.5
30"-0-30 psi	-1-0-2 bar	✓	✓	✓	✓	10	1
30"-0-60 psi	-1-0-4 bar	✓	✓	✓	✓	10	1
30"-0-100 psi	-1-0-7 bar	✓	✓	✓	✓	20	2
30"-0-150 psi	-1-0-10 bar	✓	✓	✓	✓	20	2
30"-0-200 psi	-1-0-14 bar	✓	✓	✓	✓	50	5
30"-0-300 psi	-1-0-20 bar	✓	✓	✓	✓	50	5
0-15 psi	0-1 bar	✓	✓	✓	✓	2	.2
0-30 psi	0-2 bar	✓	✓	✓	✓	5	.5
0-60 psi	0-4 bar	✓	✓	✓	✓	10	1
0-100 psi	0-7 bar	✓	✓	✓	✓	20	2
0-160 psi	0-11 bar	✓	✓	✓	✓	20	2
0-200 psi	0-14 bar	✓	✓	✓	✓	50	5
0-300 psi	0-20 bar	✓	✓	✓	✓	50	5
0-400 psi	0-27 bar	✓	✓	✓	✓	100	10
0-600 psi	0-40 bar	✓	✓	✓	✓	100	10
0-1000 psi	0-70 bar	✓	✓	✓	✓	200	20
0-1500 psi	0-100 bar	✓	✓	✓	✓	200	20
0-2000 psi	0-140 bar	✓	✓	✓	✓	500	50
0-3000 psi	0-200 bar	✓	✓	✓	✓	500	50
0-5000 psi	0-315 bar	✓	✓	✓	✓	1000	100
0-6000 psi	0-400 bar			✓	✓	1000	100

**1 1/2", 2", or 2 1/2" Case**


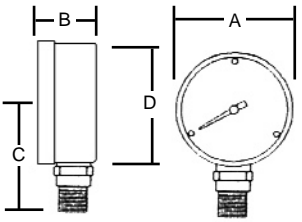

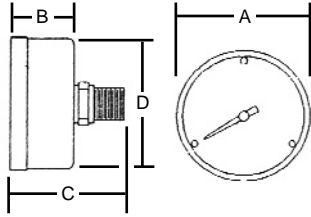

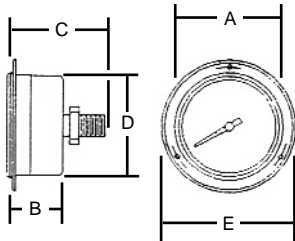

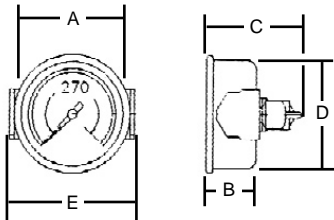
**Center Back or Bottom Mount**

These gauges are designed for use with gas, oil and water or any medium not corrosive to brass or bronze.

FEATURES	
<b>MOVEMENT:</b>	Brass
<b>BOURDON TUBE:</b>	C-Shaped in phosphor bronze up to 600 psi and Helical in phosphor bronze above 600 psi
<b>POINTER:</b>	Black enameled aluminum
<b>DIAL:</b>	White aluminum
<b>WINDOW:</b>	Polycarbonate
<b>CASE MATERIAL</b>	Steel, Corrosion resistant black
<b>CONNECTION MATERIAL</b>	Brass
<b>CONNECTION SIZE</b>	1/8" MNPT on 1 1/2" size. 1/4" MNPT on 2" and 2 1/2" sizes.
<b>ACCURACY</b>	ASME/ANSI B40.1 Grade A (2-1-2%)

PRICING AND OPTIONS - (Non-Stock)	
<b>1-1/2" CASE</b>	..... Call for Pricing
Clamp Ring	0430/40-CR . Call for Pricing
Front Flange	0330/40-FF . Call for Pricing
<b>2" CASE</b>	..... Call for Pricing
Clamp Ring	1430/40-CR . Call for Pricing
Front Flange	1330/40-FF . Call for Pricing
<b>2-1/2" CASE</b>	..... Call for Pricing
Clamp Ring	2430/40-CR . Call for Pricing
Front Flange	2330/40-FF . Call for Pricing

**CASE STYLES AND DIMENSIONS**

BOTTOM MOUNT Style 1			SIZE	A	B	C	D	E
			1-1/2"	1.735"	1.075"	1.5"	1.575"	n/a
2"	2.102"	1.075"	1.734"	1.970"	n/a			
2-1/2"	2.620"	1.165"	2.270"	2.470"	n/a			
BACK MOUNT Style 2			SIZE	A	B	C	D	E
			1-1/2"	1.732"	1.060"	1.800"	1.592"	n/a
2"	2.105"	1.060"	1.780"	1.967"	n/a			
2-1/2"	2.620"	1.165"	2.270"	2.470"	n/a			
FRONT FLANGE Style 3			SIZE	A	B	C	D	E
			1-1/2"	1.735"	1.075"	1.734"	1.575"	1.859"
2"	2.102"	1.075"	1.880"	1.970"	2.281"			
2-1/2"	2.620"	1.165"	2.270"	2.470"	2.281"			
PANEL MOUNT Style 4			SIZE	A	B	C	D	E
			1-1/2"	1.735"	1.075"	1.625"	1.575"	1.797"
2"	2.102"	1.075"	1.880"	1.970"	2.219"			
2-1/2"	2.620"	1.165"	2.270"	2.470"	1.109"			

**ORDERING INFORMATION**

To determine the ordering number, use the following information

Example - 1230DSB1500 = 2", 1/4 CBM, Utility Service, Dry, Steel Case, 1500 PSI

1	2	30	D	S	B	1500	
1 <sup>st</sup> Digit	2 <sup>nd</sup> Digit	3 <sup>rd</sup> & 4 <sup>th</sup> Digits	5 <sup>th</sup> Digit	6 <sup>th</sup> Digit	7 <sup>th</sup> Digit	Range	Suffix
Dial Size	Case Style	Model	Fill Material	Case Material	Wetted Parts	PSI	Options
0 = 1.5" 1 = 2" 2 = 2.5" 4 = 4"	1 = Bottom 2 = Back 3 = Front Flange 4 = Panel Mount	30 = Utility	D - Dry	S = Steel	B = Copper Alloy	SEE RANGE CHART	Custom Logo Color Dial Special Dial Etc.