

Model 10 Gearless Gauges (Dual Scale)



**23mm, 25mm,
1" or 1-1/4" Case**

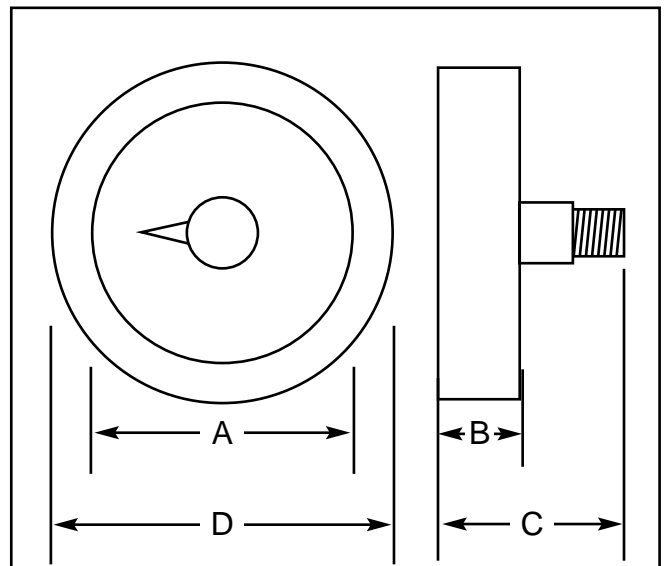
Center Back Mount Only

These gauges are designed for use on compressors, mini regulators and pneumatic applications where space is at a premium.

STANDARD RANGES

Std. gauge scales - Dual, PSI & kg/cm²
Minimum Range 100 PSI

CASE STYLES AND DIMENSIONS



SIZE	A	B	C	D
23mm		0.440	0.785	0.873
25mm		0.455	0.800	0.953
1"	0.937"	0.416"	1.040"	1.197"
1-1/4"	1.398"	0.430"	1.050"	1.602"

FEATURES

MOVEMENT	Gearless
BOURDON TUBE	Copper alloy, spiral wound
POINTER	Brass
DIAL	White aluminum
WINDOW	Acrylic
CASE MATERIAL	304 Stainless Steel
CONNECTION MATERIAL	Brass
CONNECTION SIZE	1/8" MNPT
ACCURACY	ASME/ANSI B40.1 Grade D (±5%)

PRICING AND OPTIONS (Non-Stock)

1" CASE	Call for Pricing
1-1/4" CASE	Call for Pricing